

*Lighting Your Savings
Lighting Your Success*

Product Data Sheet

LED EMERGENCY WEATHERPROOF BATTEN EMCBATTEN22WPL / EMCBATTEN24WPL / EMCBATTEN25WPL



EMCBATTEN22WPL20W 600mm LED Emergency Weatherproof Batten

EMCBATTEN24WPL40W 1200mm LED Emergency Weatherproof Batten

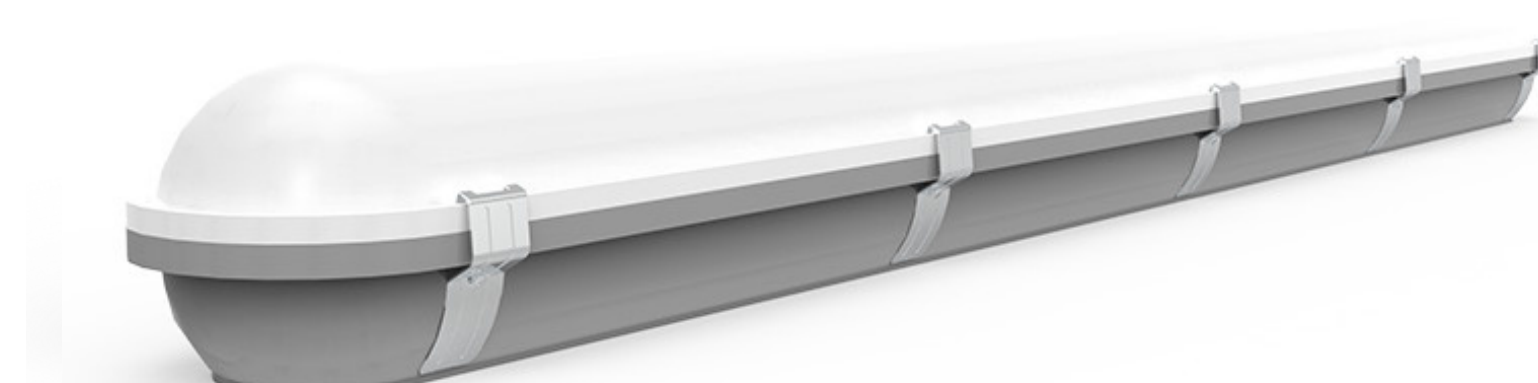
EMCBATTEN25WPL60W 1500mm LED Emergency Weatherproof Batten

WITH MICROWAVE SENSOR:

EMCBATTEN22WPLS/ EMCBATTEN24WPLS/EMCBATTEN25WPLS

ORDERING INFORMATION

Carton Qty	6 pieces	
PRODUCT	WEIGHT	DIMENSION (L X W X H)
20W 600mm	1.4kg (unit) - 5.6kg (box)	620mm x 100mm x 75mm
40W 1200mm	2.1kg (unit) - 8.4kg (box)	1220mm x 100mm x 75mm
60W 1500mm	2.7kg (unit) - 10.8kg (box)	1520mm x 100mm x 75mm



OPERATIONAL INFORMATION

TECHNICAL SPECIFICATIONS

Operating Mode	Switch Maintained
Voltage (V); Frequency (Hz)	220-260V; 50Hz
Operating Temperature	1° - 45° C
IP Rating	IP65
Wiring	Large Terminal Block
Mounting Type	Wall or Ceiling Surface Mounted
Testing System	Manual Test Switch
Construction	Polycarbonate Body and Diffuser
Standards	AS/NZ 2293 AS/NZS 60598.1 EMC

Warranty
3 Years

CLASSIFICATION

PRODUCT CODE	DESCRIPTION
EMCBATTEN22WPL	C0 D63C90 D50
EMCBATTEN24WPL	C0 D80C90 D50
EMCBATTEN25WPL	C0 D63C90 D50

SPACING TABLE AND MOUNTING HEIGHT

CLASSIFICATION	2.1m	2.4m	2.7m	3m	3.3m	3.6m	4m	4.5m	5m	6m	7m	8m	9m	10m	15m
D50	11.5	13.2	14.8	16.5	18.1	19.8	21.8	22.5	23.1	24.1	24.9	25.4	25.7	25.8	23.6
D63	11.5	13.2	14.8	16.5	18.1	19.8	22.0	24.5	25.2	26.4	27.3	28.0	28.5	28.8	27.9
D80	11.5	13.2	14.8	16.5	18.1	19.8	22.0	24.7	27.5	28.9	30.0	30.9	31.5	32.1	32.3

NOTE: Care should be taken when spacing luminaires at the distances indicated by the shaded regions to ensure that conformance to Clause 4.3 of AS/NZS 2293.1 is maintained (e.g. maximum 500 m2 per emergency luminaire).

BATTERY AND LEDs

Battery	High-Temp LiFePO4 Lithium Battery	
Power Consumption	600mm: 20W on 240V; 1200mm: 40W on 240V; 1500mm: 60W on 240V	
Power Factor	>0.95	
Charging Method	3 Stage Intelligence	
Charging Time	16 Hours	
LEDs		
PRODUCT	LUMENS OUTPUT	LED QTY
600mm	2090lm	120 pcs
1200mm	4600lm	240 pcs
1500mm	7450lm	360 pcs
Colour Temperature	4000k	

REPLACEMENT PART

PART NUMBER	DESCRIPTION
BBATTEN22WPL	LiFePO4 Lithium Battery, 6.4V; 3000mAh
BBATTEN24WPL	LiFePO4 Lithium Battery, 6.4V; 3000mAh
BBATTEN25WPL	LiFePO4 Lithium Battery, 6.4V; 3000mAh

